



FS25 Range of Fuel Selectors



The FS25 range consists of 5 models of Fuel Selector which are currently available from Andair. From a simple ON/OFF shut off valve to a more complex 4 way selector (3 tanks and OFF), all of the valves come with some superb features:

- Smooth action between each tank selection
- Safety button that must be raised to switch OFF the fuel, this helps to prevent inadvertent fuel shut off.
- Clearly labeled fascia plate, this can be custom engraved.
- Choice of lower fitting.
- Choice of side fittings.
- All models can be supplied with an extension and universal joints.

FS25 Models

FS25x1 - ON|OFF (90 degree action shut OFF Valve)

FS25x2 - LEFT|RIGHT|OFF (90 degrees between LEFT and RIGHT)

FS25x3 - LEFT|RIGHT|OFF (180 degrees between LEFT and RIGHT)

FS25x4 - LEFT|BOTH|RIGHT|OFF (90 degrees action between each position)

FS25x5 - LEFT|MAIN|RIGHT|OFF (90 degrees action between each position)

Andair Ltd
Unit 1, Dunsbury Business Park,
Fulford Road,
Havant, Hampshire
PO9 5AX, England

Tel +44(0) 2392 473 945
 Fax +44(0) 2392 473 946
 e-mail - info@andair.co.uk
 web - www.andair.co.uk

Andair Ltd
Unit 1, Dunsbury Business Park,
Fulford Road,
Havant, Hampshire
PO9 5AX, England

Tel +44(0) 2392 473 945
 Fax +44(0) 2392 473 946
 e-mail - info@andair.co.uk
 web - www.andair.co.uk

Andair
precision aircraft components

PRODUCT - Selector Valve - Type 1

SPEC SHEET

FS25x1 REV1

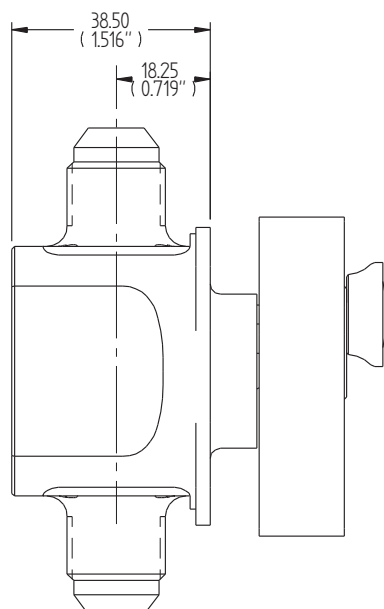
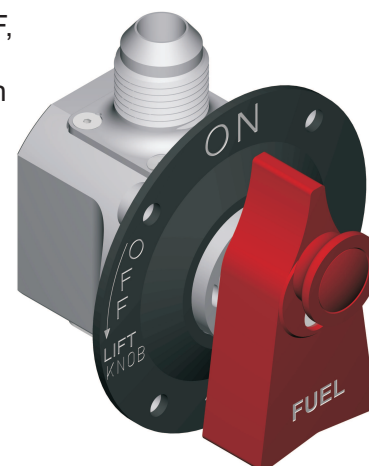
The FS25x1 is a simple shut off valve and has the two positions, ON - OFF, with a 90 degree action between each position. The action is smooth and easy. On top of the lever is the safety button which must be raised to switch off the fuel. This helps prevent the fuel being accidentally turned off.

On the Fs25x1 there are two ports and either port can be used as the inlet or outlet. Both fittings can be customised during the ordering process. It is Chromic anodised for corrosion protection, and is satisfactory for all fuel types.

Options available include :-

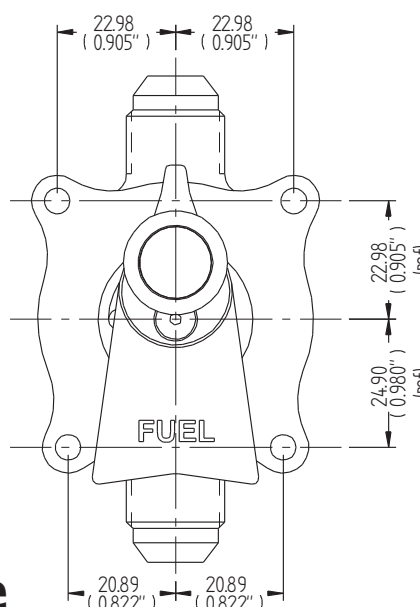
Extension Equipment.

Special Engraving: On the FS25x1 the 'ON' text can be customised.

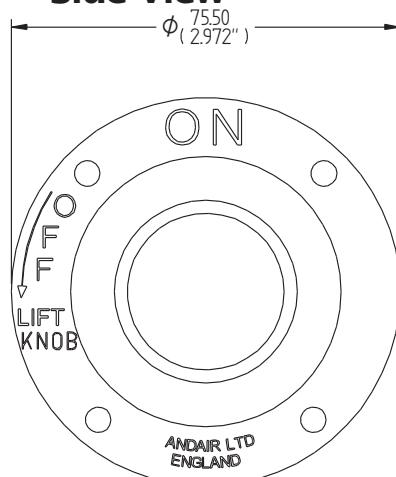


Side View

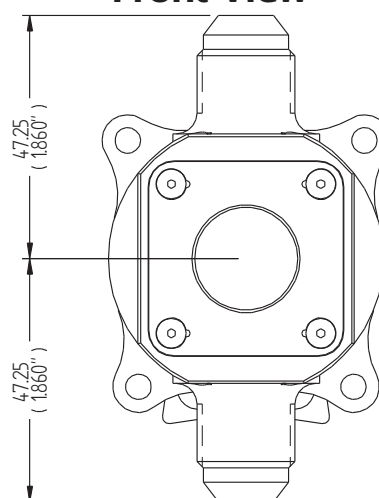
Not to scale



Front View



Fascia Plate



Rear View

Andair Ltd
Unit 1, Dunsbury Business Park,
Fulflod Road,
Havant, Hampshire
PO9 5AX, England

Tel +44(0) 2392 473 945
Fax +44(0) 2392 473 946
e-mail - info@andair.co.uk
web - www.andair.co.uk

Andair
precision aircraft components

PRODUCT - Selector Valve - Type 2

SPEC SHEET

FS25x2_{REV1}

The FS25x2 is a three way fuel selector with the positions LEFT - RIGHT - OFF. There is a 90 degree action between each tank selection. The FS25x2 has no lower fitting which means that it is ideal for areas where there is little space behind the valve. This valve has also proven to be popular in an aeroplane configuration where there are two fuselage tanks, for example Main and Header, Front and Rear or Upper and Lower.

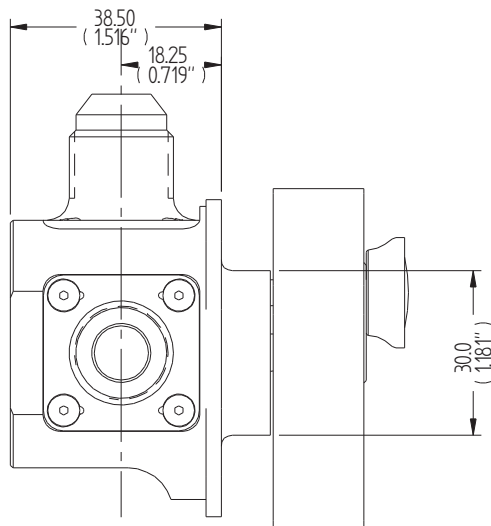
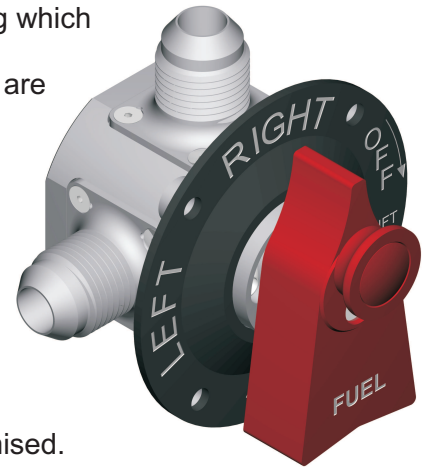
This valve has the inlets ports at the Left and Right hand side and the outlet towards the front, each fitting can be customised during the ordering process. It is Chromic anodised for corrosion protection, and is satisfactory for all fuel types.

When the valve is in the OFF position there is no crossfeed between the tanks.

Options available include :-

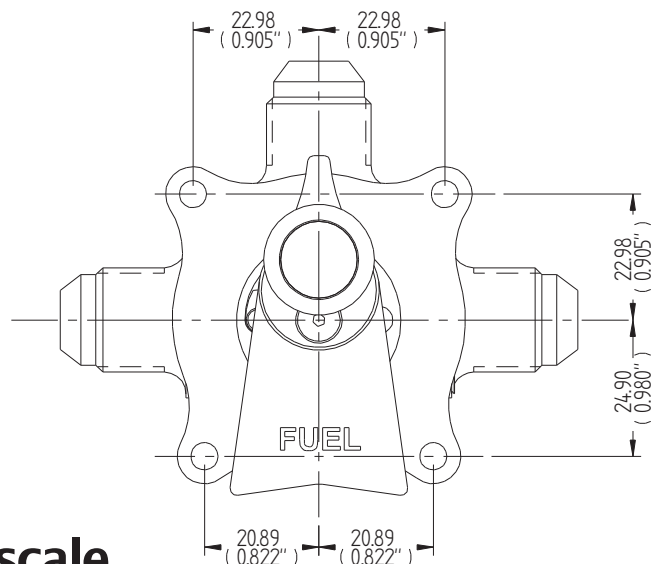
Extension Equipment.

Special Engraving: On the FS25x2 the 'LEFT' and 'RIGHT' text can be customised.

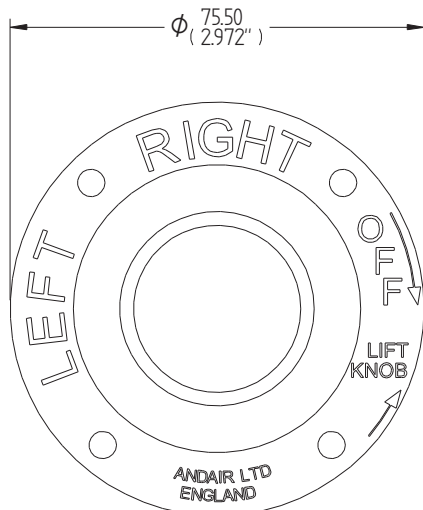


Side View

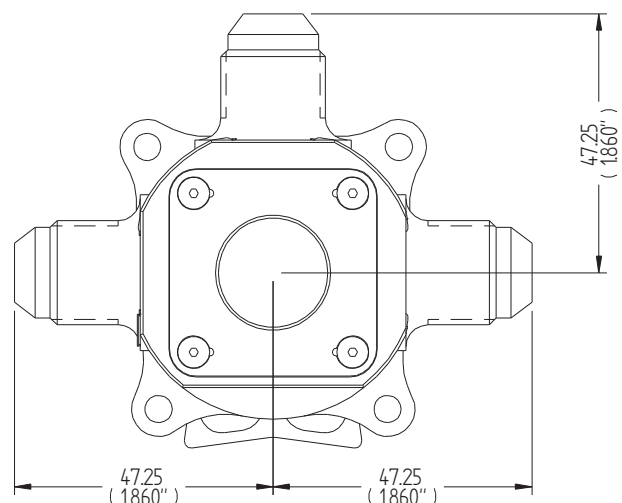
Not to scale



Front View



Fascia Plate



Rear View

Andair Ltd
Unit 1, Dunsbury Business Park,
Fulford Road,
Havant, Hampshire
PO9 5AX, England

Tel +44(0) 2392 473 945
 Fax +44(0) 2392 473 946
 e-mail - info@andair.co.uk
 Web - www.andair.co.uk

Andair
precision aircraft components

PRODUCT - Selector Valve - Type 3

SPEC SHEET

FS25x3_{REV1}

The FS25x3 is a three way selector with the positions LEFT - RIGHT - OFF. There is a 180 degree action between the left and right, giving it a logical arrangement. Generally this valve is used in low wing aircraft with a tank in each wing. The valve has a beautifully smooth action between tanks which is an important feature when one is normally switching tanks every 20 minutes or so. Also there is a strong, firm detent at each tank position giving a welcome reassurance that the valve is in the correct position. With the valve comes a clearly labeled fascia plate.

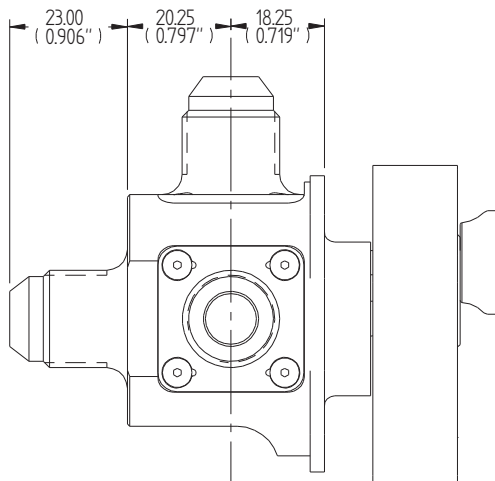
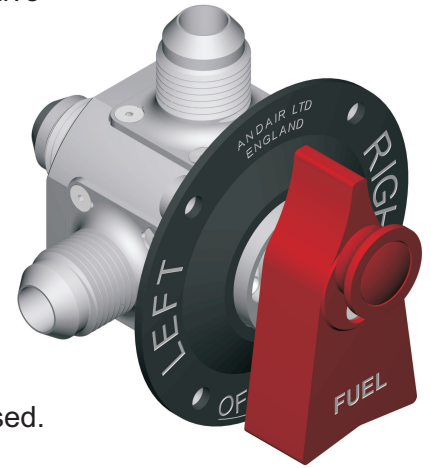
On the FS25x3 there are 3 ports. The lower port is the outlet to the engine and can be Male AN-8, Female 3/8 NPT or a Banjo fitting which is a 360 degree adjustable fitting with a male AN-8 end. This can be configured whilst ordering.

The design of this valve ensures that when the selector is in the OFF position, there is no cross feed between tanks. So if you have your aeroplane parked On a slope, no cross feeding will occur.

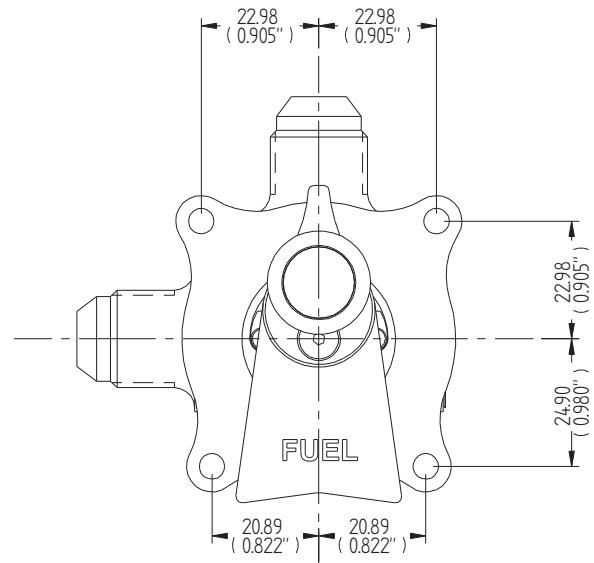
Options available include :-

Extension Equipment.

Special Engraving: On the FS25x3 the 'LEFT' and 'RIGHT' text can be customised.

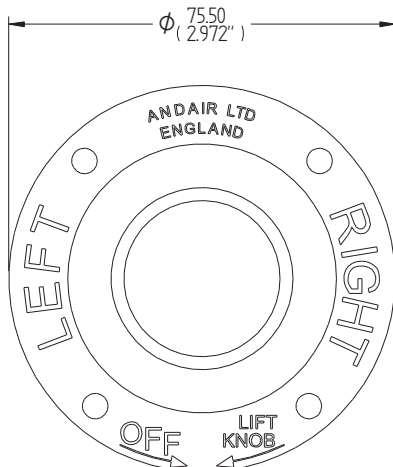


Side View

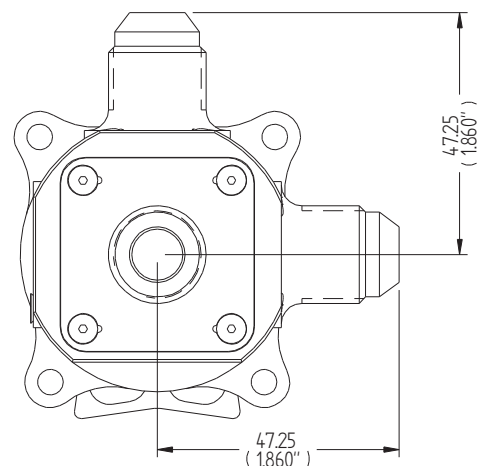


Not To Scale

Front View



Fascia Plate



Rear View

Andair Ltd
Unit 1, Dunsbury Business Park,
Fulford Road,
Havant, Hampshire
PO9 5AX, England

Tel +44(0) 2392 473 945
 Fax +44(0) 2392 473 946
 e-mail - info@andair.co.uk
 web - www.andair.co.uk

Andair
precision aircraft components

PRODUCT - Selector Valve - Type 4

SPEC SHEET

FS25x4_{REV1}

The FS25x4 Fuel Selector is designed for high wing aircraft where it is possible to feed from both tanks simultaneously. Porting for the both position is done internally so there is no need to T the two tanks together. There is a smooth 90 degree action between each selection and a strong, firm detent gives a welcome reassurance that the valve is in the correct position, and has the safety feature where the red button on the lever has to be raised to switch off the fuel. The valve comes with a clearly labeled fascia plate. It is Chromic anodised for corrosion protection, and is satisfactory for all fuel types.

The FS25x4 has three ports. The lower port is the outlet to the engine and can be Male AN-8, Female 3/8 NPT or a Banjo fitting which is a 360 degree adjustable fitting with a male AN-8 end. This can be configured whilst ordering from our website.

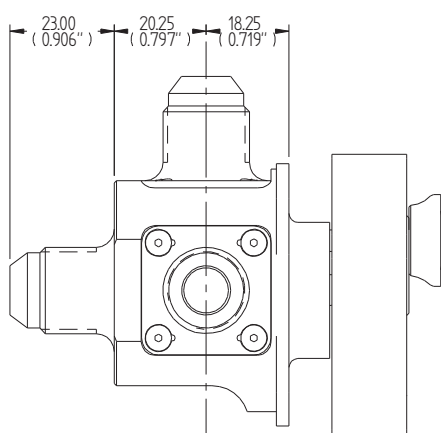
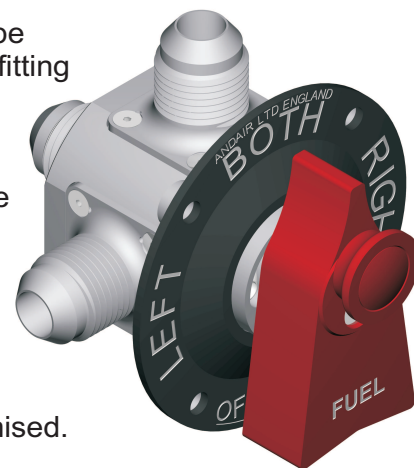
The inlet, side ports can be any of the 1/2" fittings that Andair supply and are at the 9 O'clock and 12 O'clock positions when looking at the valve with the spindle pointing upwards.

When the valve is in the OFF position there is no crossfeed between the tanks.

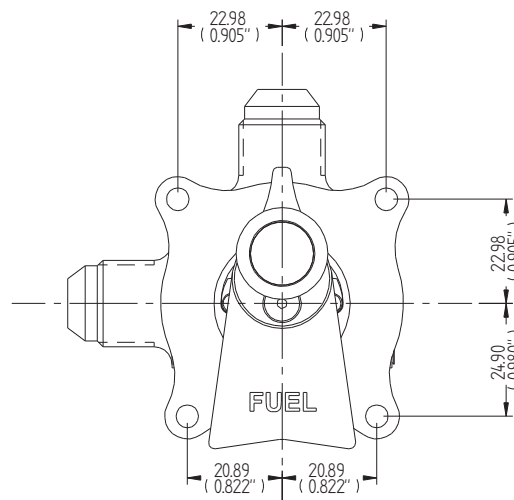
Options available include :-

Extension Equipment.

Special Engraving: On the FS25x4 the 'LEFT' and 'RIGHT' text can be customised.

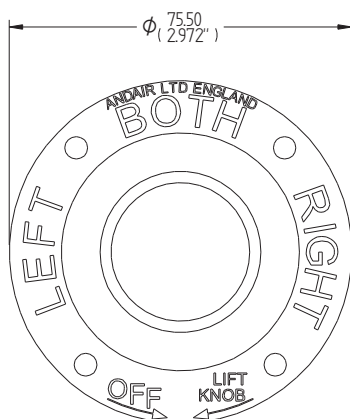


Side View

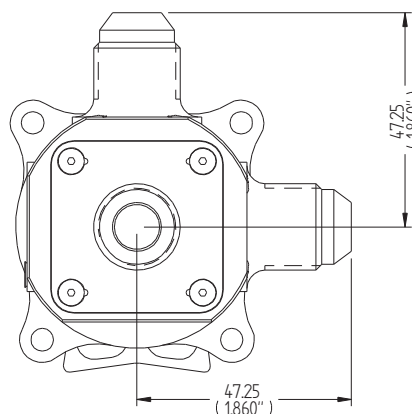


Front View

Not To Scale



Fascia Plate



Rear View

Andair Ltd
Unit 1, Dunsbury Business Park,
Fulford Road,
Havant, Hampshire
PO9 5AX, England

Tel +44(0) 2392 473 945
 Fax +44(0) 2392 473 946
 e-mail - info@andair.co.uk
 web - www.andair.co.uk

Andair
precision aircraft components

PRODUCT - Selector Valve - Type 5

SPEC SHEET
FS25x5 REV1

The FS25x5 is a 4 way Fuel Selector (3 tanks and OFF) and has the positions LEFT - MAIN - RIGHT - OFF, each at 90 degree intervals. The valve has a very smooth action and a reassuringly firm detent in each tank selection. To aid the pilot further the fascia plate is clearly labeled with the tank name, the engraving on the fascia plate can be customised during ordering.

As a safety feature the valve is fitted with a Safety Button, which must be raised to switch off the fuel supply to the engine. This helps to prevent inadvertent switch off.

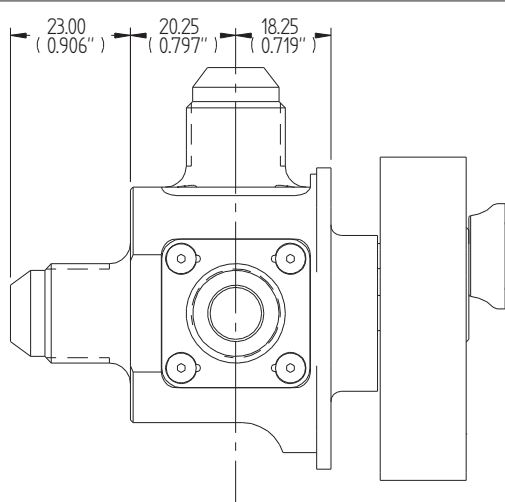
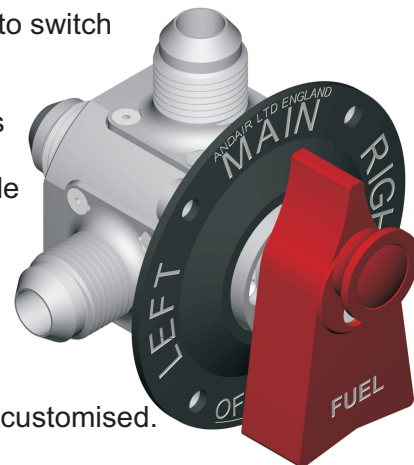
The inlet ports are around the side of the valve and can be any of the 1/2" fittings that Andair supply. The outlet to the engine is at the bottom of the valve and can be Male AN-8, Female 3/8 NPT or a Banjo fitting which is a 360 degree adjustable fitting with a male AN-8. This can be configured while ordering from our website.

When the valve is in the OFF position there is no crossfeed between the tanks.

Options available include :-

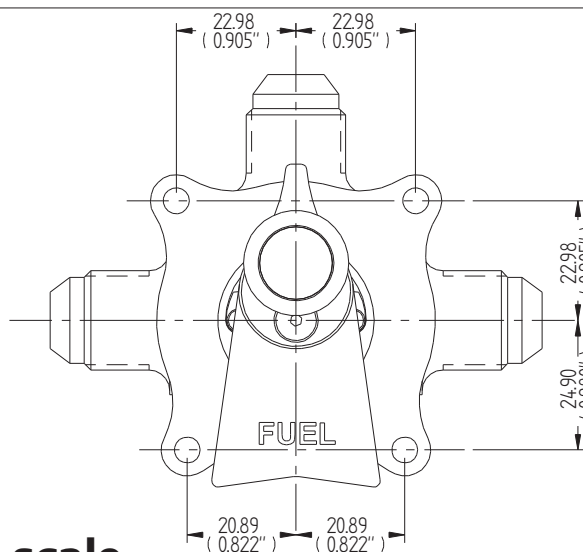
Extension Equipment.

Special Engraving: On the FS25x5 the 'LEFT', 'MAIN' and 'RIGHT' text can be customised.

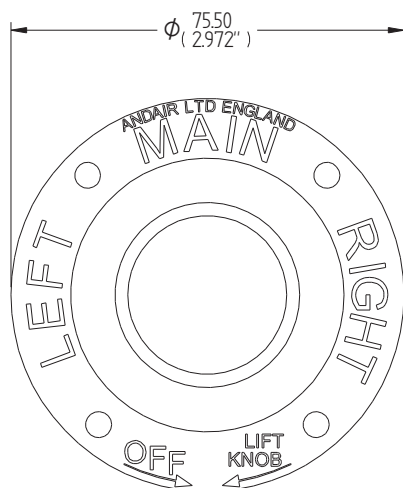


Side View

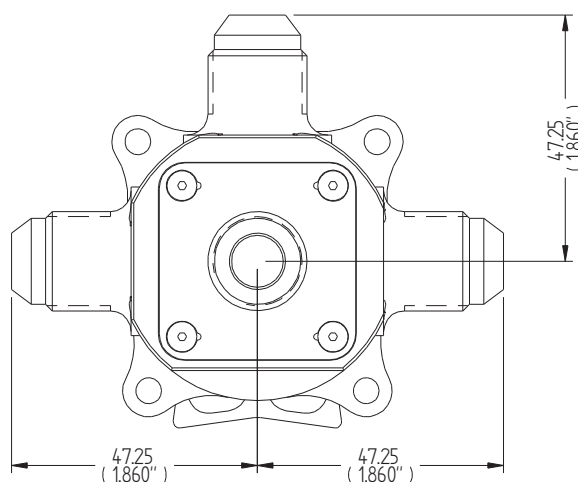
Not to scale



Front View



Fascia Plate



Rear View

Andair Ltd
Unit 1, Dunsbury Business Park,
Fulford Road,
Havant, Hampshire
PO9 5AX, England

Tel +44(0) 2392 473 945
Fax +44(0) 2392 473 946
e-mail - info@andair.co.uk
web - www.andair.co.uk

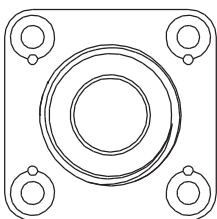


FS25 Fittings

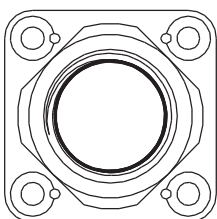
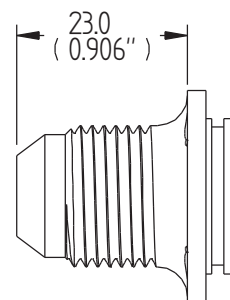
SPEC SHEET

FS25FIT REV1

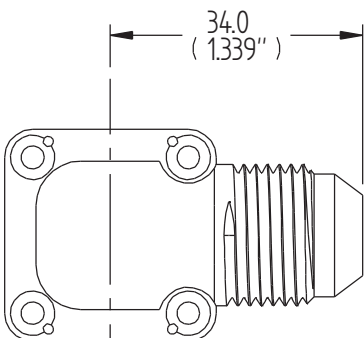
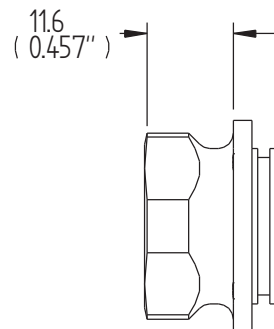
These fittings fit the following products: all FS25 fuel selectors, the feed line of the FS2520 and EFS2520 duplex fuel selectors, and all GAS500 gascolators.



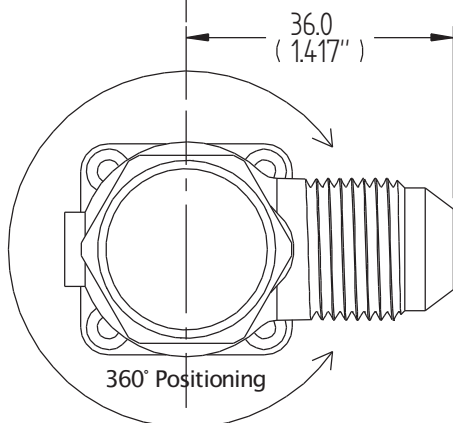
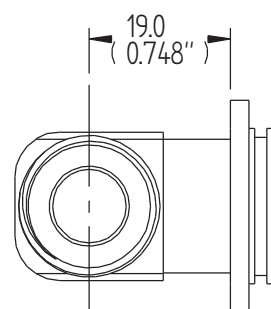
MF25
AN-8 Male
Fitting



FF25
3/8" NPT
Female Fitting



EF25
AN-8 Male
Elbow Fitting



BF25
AN-8 Male
Banjo Fitting

