

**PRODUCT - Gascolator GAS375**

**SPEC SHEET**

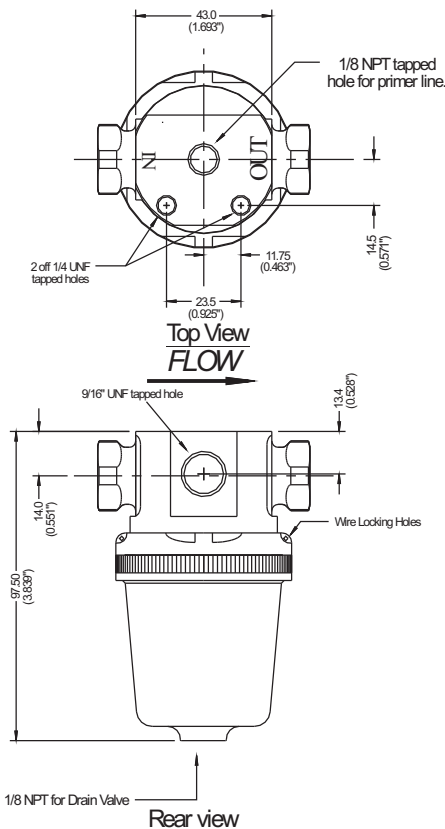
**GAS01** REV3

This premium Gascolator is machined from solid aluminium and anodised for corrosion protection. Inside the GAS375 is an improved filtration device to prevent any water getting into the engine. The PTFE coated 70 micron washable screen gives the unit excellent flow characteristics and minimal pressure drop. An Air Bleed Vent ensures that any air trapped after maintenance escapes. The GAS375 has internal o-rings ensuring that the unit can be used on pressurised fuel systems.

Mounting is made using the 9/16 UNF tapped hole in the back or the two 1/4-UNF holes on the top. Additionally Andair now produce a bracket for this Gascolator.



The GAS375-F is shown above, fitted with the Andair all Stainless Steel zero corrosion drain valve and Female fittings (1/4" NPT)



**General Specification**

- Interchangeable fittings.
- 1/8" NPT bowl drain and pressure tapping.
- Air bleed Vent.
- Impervious to all known fuels.
- SWP 100 PSI.
- Rear 9/16" UNF mounting point.
- Two top 1/4" UNF Mounting points.
- Weight 152g (excluding fittings).
- Cleanable filter.
- Low pressure loss through unit.



This image shows the high surface area filter screen

**Gascolator Accessories**



**Drain Valve (DV125)**

New to Andairs product line is this all Stainless Steel Drain Valve. Machined with 1/8" NPT and using a Viton O-ring, this drain valve will not corrode or leak.



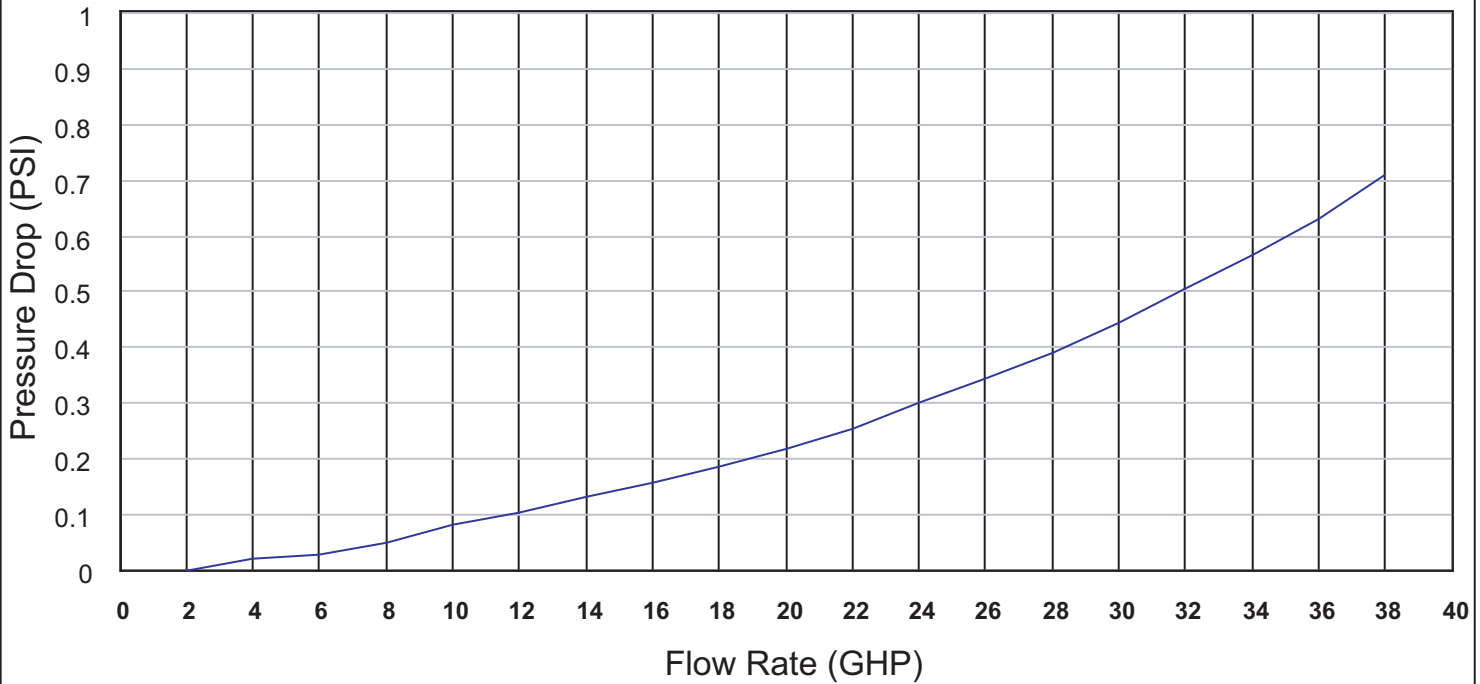
**Collector Cup (CC125)**

To sample fuel for water contamination use our new sample cup. It can be used with all standard drain valves and is light and easy to use. The snap on lid prevents the nasty petrol fumes lurking in the cockpit and there's no need to worry about the wind as the cup shields it out. Made from anodised aluminium.

Graph Showing Flow Rate vs Pressure Drop

SPEC SHEET  
 GAS01 REV3

### Andair Gascolator GAS375



Data	Flow Rate (GHP)	Pressure Drop (PSI)
	2	0.00
	4	0.02
	6	0.03
	8	0.05
	10	0.08
	12	0.11
	14	0.14
	16	0.16
	18	0.19
	20	0.22
	22	0.26
	24	0.30
	26	0.35
	28	0.39
	30	0.44
	32	0.50
	34	0.56
	36	0.63
	38	0.71

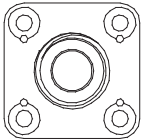
Andair Gascolator GAS375

**Fitting Options**

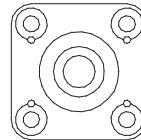
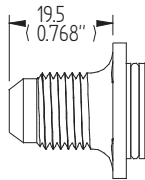
**SPEC SHEET**

**GAS01** REV3

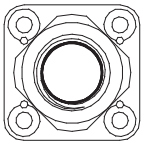
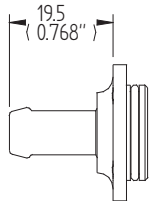
These fittings fit the following products: all FS20, EFS20, FS2020 and EFS2020 fuel selectors, the feed line of the FS22 and EFS22 duplex fuel selectors, the return line of the FS2520 and EFS2520 duplex fuel selectors, and all GAS375 gascolators.



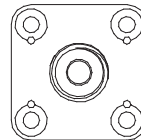
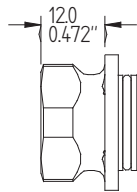
**MF20**  
**AN-6 Male**  
**Fitting**



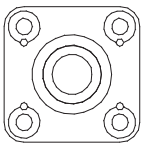
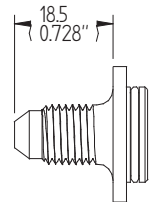
**HF20-Q**  
**5/16" Hose**  
**Fitting**



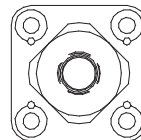
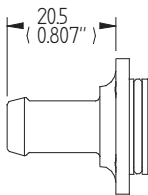
**FF20**  
**1/4" NPT**  
**Female Fitting**



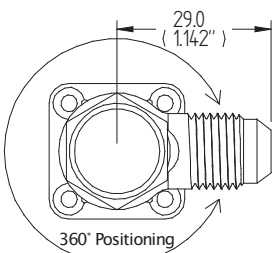
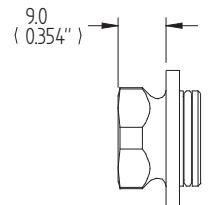
**MF20-L**  
**AN-4 Male**  
**Fitting**



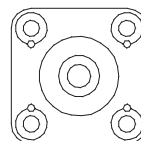
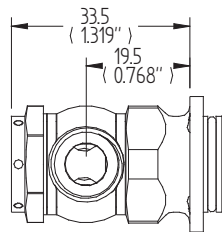
**HF20**  
**3/8" Hose**  
**Fitting**



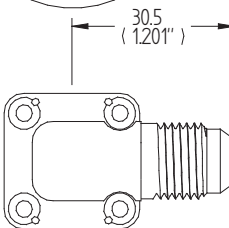
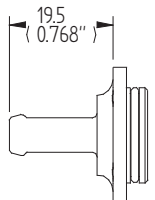
**FF20-A**  
**1/8" NPT**  
**Female Fitting**



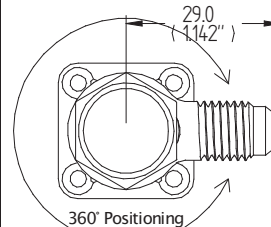
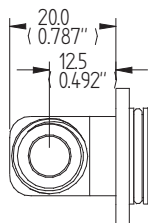
**BF20**  
**AN-6 Male**  
**Banjo Fitting**



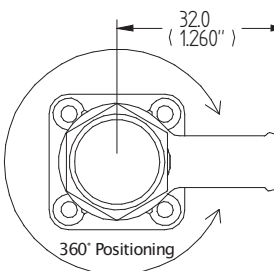
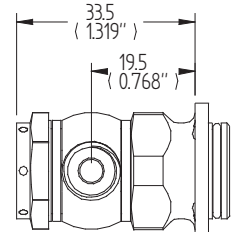
**HF20-E**  
**1/4" Hose**  
**Fitting**



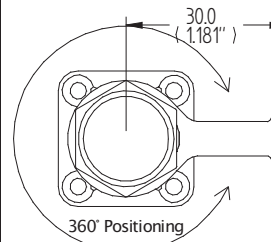
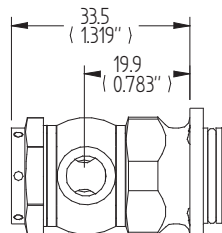
**EF20**  
**AN-6 Male**  
**Elbow Fitting**



**BF20-J**  
**AN-4 Banjo**  
**Fitting**



**BF20-H**  
**3/8" Hose**  
**Banjo Fitting**



**BF20-E**  
**1/4" Hose**  
**Banjo Fitting**

