

Andair Ltd,
Unit 1, Fulflood Road
Havant,
Hampshire,
PO9 5AX
England

Telephone: +44(0)2392473945
Fax: +44(0)2392473946
Email: info@andair.co.uk
Website: www.andair.co.uk



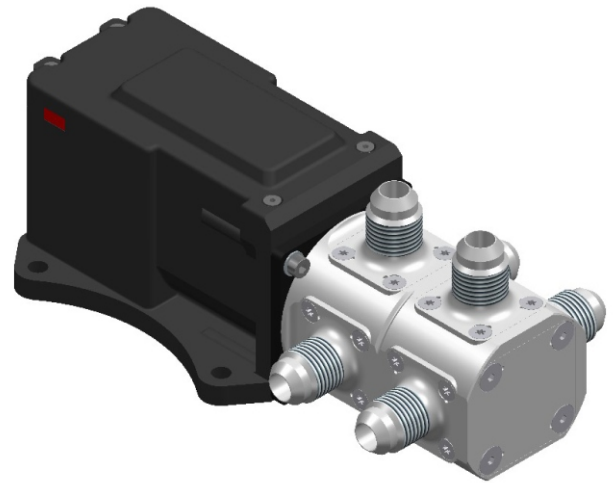
Electrically Operated Duplex Fuel Selector

Product Description

The FS2020-D2-M Elec 28V (as shown in the picture) is an electrically operated Duplex Fuel Selector. Actuation of the valve comes from a Stepper Motor driven directly through a Reduction Gearbox. Microprocessor control tracks the valves position and operates the valves when commanded. The Duplex Valve allows for 2 fuel lines to be switched independently, great for Fuel Injected Fuel Systems.

Key Features

- Compact form factor
- Light weight
- Fast Operation
- Quiet Operation
- Easy to use



Technical Specifications

Fittings: Male AN - 6 fittings by default, a choice of fittings is available

Dimensions: Approx 161 x 81 x 64 mm (depending on fittings configuration)

Weight: 960 grams (880 grams valves and control unit, 80 grams switch box)

Rotational Speed: TBC

Noise Level: TBC

Material: Aerospace Grade Aluminium

Nominal Power Requirement: 28V/1.5A

Operating Voltage Range: 24 - 32 VDC

Idle Current: 0.15A

