

**Andair Ltd**  
Unit 1, Dunsbury Business Park,  
Fulflod Road,  
Havant, Hampshire  
PO9 5AX, England

**Tel +44(0) 239 247 3945**  
**Fax +44(0) 239 247 3946**  
**Email - info@andair.co.uk**  
**Website - www.andair.co.uk**

**Andair**  
*precision aircraft components*

## PRODUCT - Smoke/ Transfer Pump

The reputation for high quality engineering and superb design continues in the form of the revolutionary New Brushless Motor High Pressure Fuel Pump from Andair.

After extensive research and development Andair have developed the 'PX375-TC' Boost and the 'XP375-TC' Transfer Pump.

Each model features a Brushless motor. This motor, also developed and manufactured by Andair is light weight, powerful and reliable.

The Pump components are D2 tool steel providing unequalled wear characteristics.



The Andair Brushless Fuel Pump motor is immersed within the fuel. This has 3 distinct advantages; the fuel can be used to cool the internals and the design ensures there will never be any leaks between the drive to the pump, furthermore, using advanced materials and machining techniques we can use the fuel to lubricate the internals giving us better performance.

## GENERAL XP375-TC SPECIFICATION :-

11-16.6 VDC 6 AMPS MAX / 4.5 AMPS NORM.

Flow: 16 GPH @ 25PSI / 60 GPH @ 7PSI

NO FLOW MAX PRESS. 25 PSI

SELF PRIMING TO 10ft (3m) THROUGH 3/8" TUBE

FITTINGS: 1/4 NPT INPUT AND MALE AN-6 OUTPUT

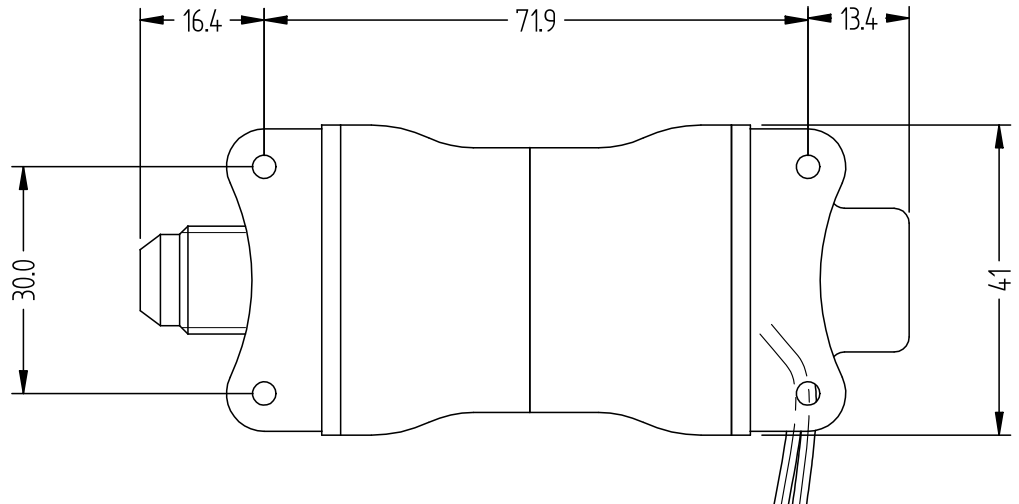
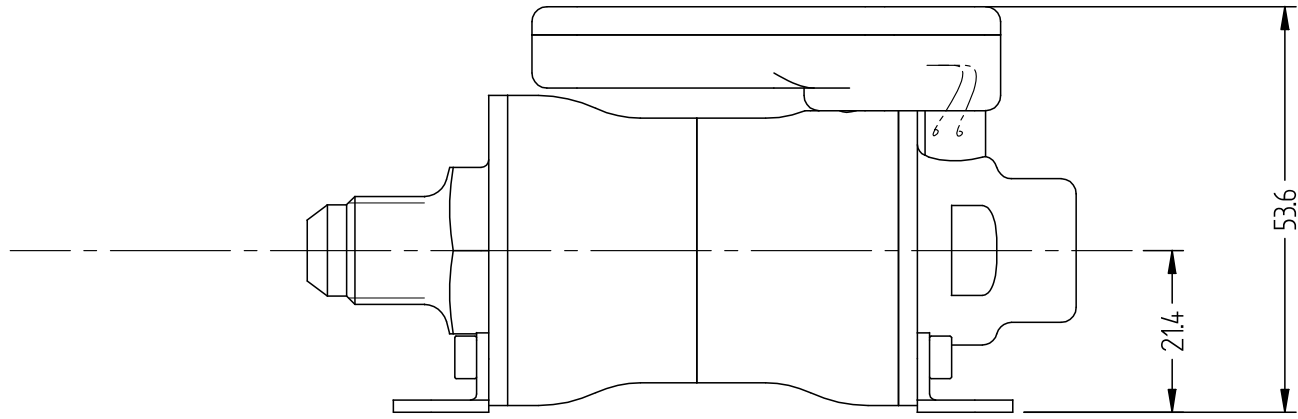
1/4 NPT TO AN-6 ADAPTER INCLUDED.

SOFT START / CONTINUOUS DUTY

WEIGHT 460g / AEROSPACE GRADE ALUMINIUM BODY

Contact Andair. Pump@andair.co.uk

|                             |   |       |      |             |            |           |         |          |               |
|-----------------------------|---|-------|------|-------------|------------|-----------|---------|----------|---------------|
| Part No.<br><b>XP375-TC</b> | CAD generated drawing.<br>Do not manually update. | Issue | ECN# | Change      | Date       | Drawn     | Checked | Approval | Approval Date |
|                             |   | 1     |      | First drawn | 14/07/2010 | A Lindsay |         |          |               |

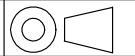


Andair Ltd. OWNS THE COPYRIGHT OF THIS DRAWING WHICH IS SUPPLIED IN CONFIDENCE, AND MUST NOT BE USED FOR ANY PURPOSE OTHER THAN FOR WHICH IT IS SUPPLIED, AND MUST NOT BE REPRODUCED IN WHOLE OR IN PART WITHOUT THE PERMISSION IN WRITING OF THE OWNERS.

**Andair Ltd.**

All dimensions are in millimeters.

Tolerances unless otherwise specified :  
 x. : ± 0.20  
 x.x : ± 0.10  
 x.xx : ± 0.05



Material:

Description:  
Smoke / Transfer Pump

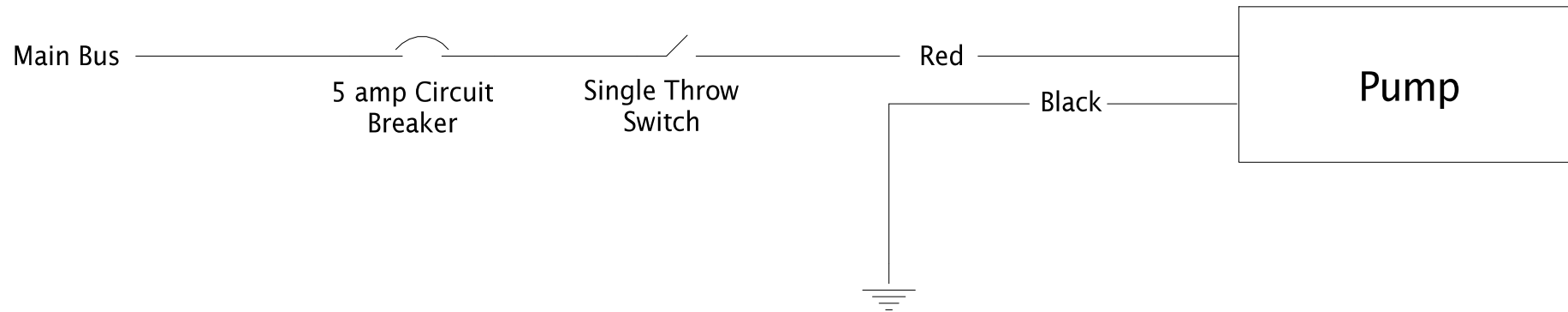
Part No. XP375-TC

|          |      |       |      |             |            |           |         |          |               |
|----------|------|-------|------|-------------|------------|-----------|---------|----------|---------------|
| Part No. | PCD2 | Issue | ECN# | Change      | Date       | Drawn     | Checked | Approval | Approval Date |
|          |      | 1     |      | First drawn | 14-07-2010 | A Lindsay |         |          |               |

**Wiring for PX375-TC, PX500-TC and XP375-TC Pumps**

The Pump has two wires, Red and Black, to be connected to the aircraft.

The Red wire should be connected to the Main Bus via a Single Throw Switch and a 5 amp Circuit Breaker.  
The Black wire goes to ground (earth).



CAD generated drawing.  
Do not manually update.

|  |                                    |   |  |
|--|------------------------------------|---|--|
| <b>Andair Ltd.</b> OWNS THE COPYRIGHT OF THIS DRAWING WHICH IS SUPPLIED IN CONFIDENCE, AND MUST NOT BE USED FOR ANY PURPOSE OTHER THAN FOR WHICH IT IS SUPPLIED, AND MUST NOT BE REPRODUCED IN WHOLE OR IN PART WITHOUT THE PERMISSION IN WRITING OF THE OWNERS. | All dimensions are in millimeters. |   | Description:<br><b>Pump Wiring Diagram</b> |
|  | <b>Andair</b>                      | Tolerances unless otherwise specified :<br>x. : ± 0.20<br>x.x : ± 0.10<br>x.xx : ± 0.05 |  |
|  |                                    |   | Part No.<br><b>PCD2</b>                    |